

Winter Concert Series

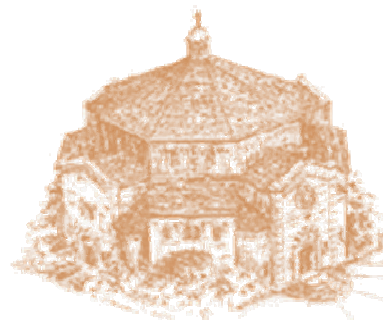
Yes, I would like to support the concert series!

SPONSORSHIP LEVELS *(check one)*

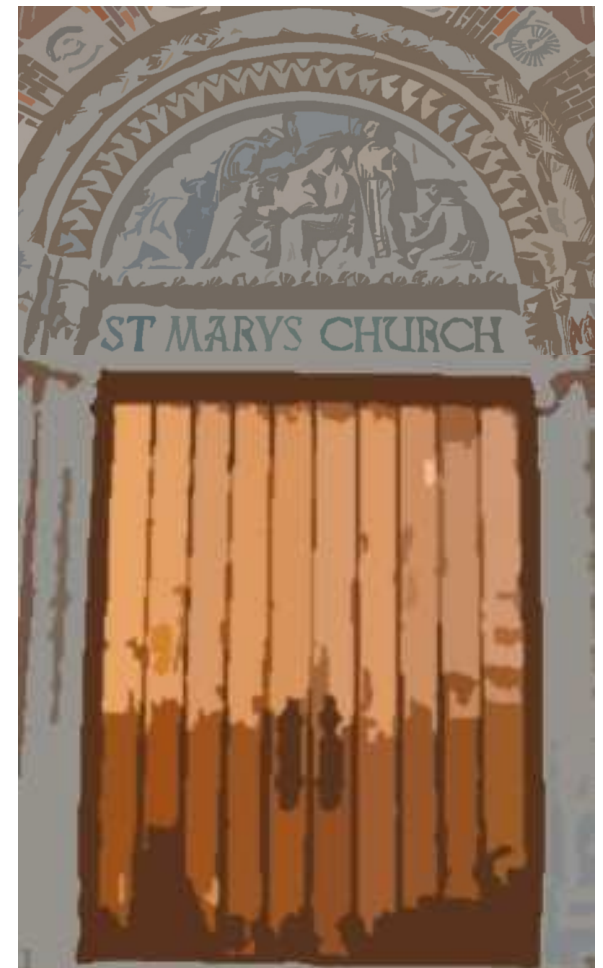
- Cherubim** **\$300 to \$1,000**
(includes reserved seating at all concerts, a free GUEST PASS for the entire series, and recognition in concert programs)
- Patron** **\$100 to \$299**
(includes recognition in concert programs)
- Donor** **\$50 to \$99**
- Friend** **\$5 to \$49**
- I cannot make a donation, but please add me to the mailing list for future concerts.*

Amount	<input type="text"/>
Enclosed:	<input type="text"/>
Check #:	<input type="text"/>
VISA, MC, AM EX, OTHER	<input type="text"/>
Credit Card #	<input type="text"/>
Expiration Date	<input type="text"/>
Name	<input type="text"/>
Address	<input type="text"/>
City, State, Zip	<input type="text"/>
Phone	<input type="text"/>
Email	<input type="text"/>

Please mail your donation to :
Music Department,
St. Mary, Our Lady of Grace
515 4th Street South
St. Petersburg, FL 33701



ST. MARY, OUR LADY OF GRACE
515 4th Street South
St. Petersburg, FL 33701



2012
Winter
Concert Series

JANUARY 8, 2012

GLORIA: Music of the Christmas Season



The Choir of St. Mary, directed by Michelle Rego and accompanied by Mr. Dwight Thomas, presents a performance of the famous GLORIA by Antonio Vivaldi in the fabulous acoustics of historic St. Mary's!

JANUARY 20, 2012

"Introducing Bulgaria" with Ensemble Mir
(Friday at 7:00 pm)



Under the direction of Dr. Matthew Caine, this professional chamber chorus comes to St. Mary's for a musical introduction to the beautiful country of Bulgaria. From the moment the concert begins with Bulgaria's regal national anthem, *Mila rodino*, enjoy each moment as you hear the exotic nature of Bulgaria's folk music, the reverential splendor of its sacred music, and the unique grandeur of its classical music. By the concert's end, you, too, will want to sing, *Rodna pesen nas navek ni svuhrzva* (Our native song binds us forever)! Join the group after the concert for a reception featuring authentic Bulgarian fare!

FEBRUARY 5, 2012

"The French Connection"
with Dwight Thomas, organ



Organist and Maestro Dwight Thomas, Music Director at St. Peter's Episcopal Cathedral here in Saint Petersburg, presents a concert of Romantic French Music for the "king of instruments".

FEBRUARY 21, 2012

Evenings with the Maestro:
an Introduction to "Samson and Dalilah"
(Tuesday at 7:00 pm)



The St. Petersburg Opera Company presents a preview to their upcoming production of SAMSON and DALILAH, a French Romantic opera written by Camille Saint-Seans. Artistic and Executive Director Maestro Mark Sforzini will give a guide to opera appreciation for beginners, and discount tickets to SAMSON (show dates March 2,4, and 6) will be for sale!



(Go to the St. Petersburg Opera website at www.stpeteopera.org for opera details!)

All concerts are Sunday
at 3:00 pm in the church
(unless otherwise specified)

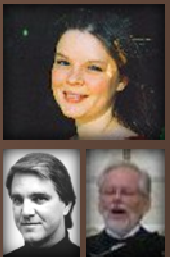
Concerts are 60 minutes in length
FREE of charge

FEBRUARY 26, 2012

"From Baroque to Broadway"
Meghan Alfaro, soprano



Enjoy a delightful afternoon with Meghan Alfaro performing songs and arias ranging from Puccini to Gershwin. Accompanied by Larry Kent on piano, the program includes favorites such as *O mio babbino caro*, *Summertime*, and duets from Mozart's *Magic Flute* and Irving Berlin's *Annie Get Your Gun* with special guest George Western, tenor. The artists are all members of the prestigious ensemble, FLORIDA PRO MUSICA.



MARCH 11, 2012

"An Irish Afternoon"



With a sprinkling of Irish humor, Bonnie Whitehurst will accompany her singing of traditional Celtic favorites playing a wide variety of string, keyboard and percussion



instruments. Joining her on flute for select songs will be Saint Mary's Music Director Michelle Rego.

MARCH 25, 2012

The Saint Petersburg College Madrigalians



Join the MADRIGALIANS, the honors ensemble from St. Petersburg College, under the direction of Dr. Vernon Taranto, for an afternoon of classical choral music.